

TWO BEDROOM APARTMENT
UNIT 101

the **MEADE**

* Indicated values are estimates

Estimated bond cost is calculated on 90% finance over 20 years, using the current prime lending rate
Unit axonometric is an artist's impression, layout may differ slightly | T&C's apply

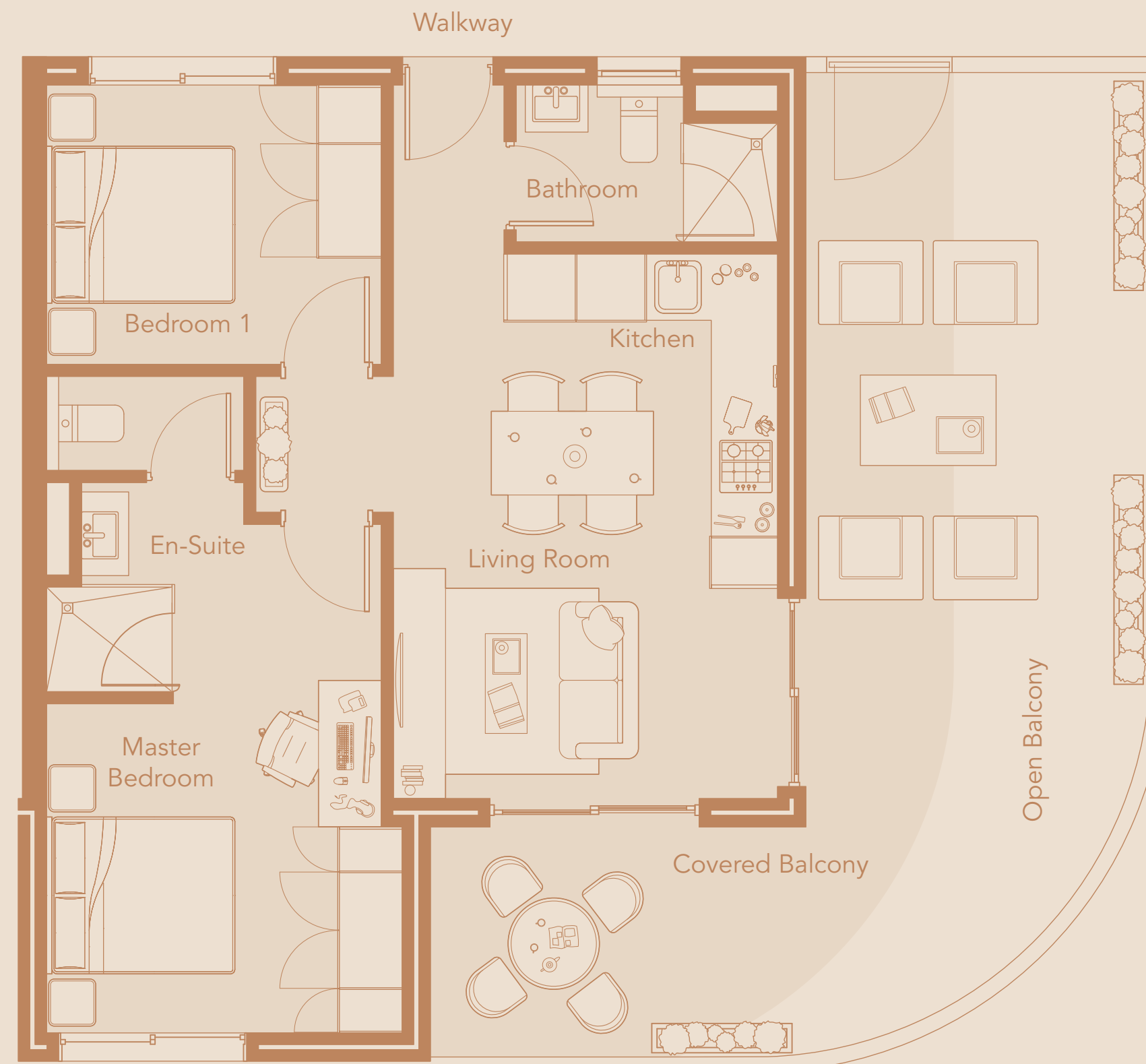
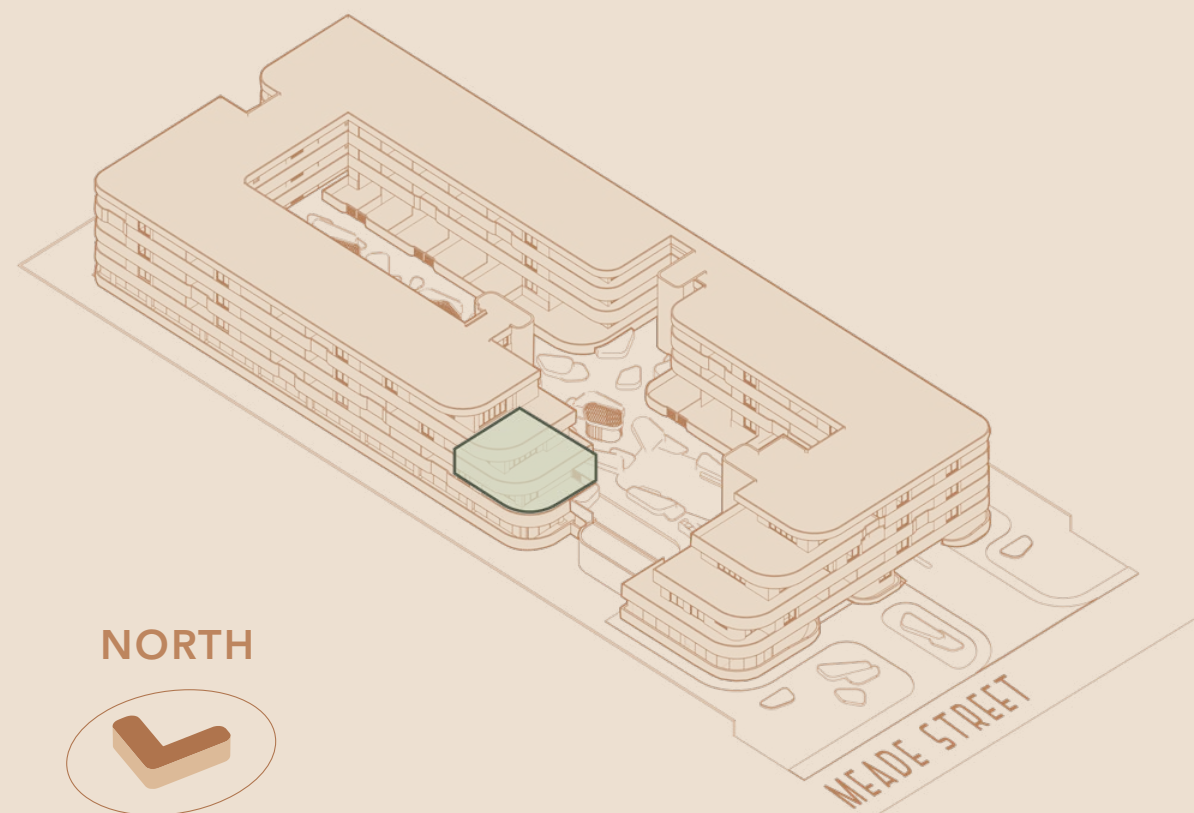
R3,175,000



Levies* **R2,722 PM**
Rates* **R2,100 PM**
Bond Cost* **R30,967 PM**

Total Area **97.87 SQM**
Internal Area 58.9 SQM
Covered Balcony 20.4 SQM
Open Balcony 18.57 SQM

Location in Building
FIRST FLOOR



VIEW TO OUTENIQUA