

ONE BEDROOM APARTMENT
UNIT 102

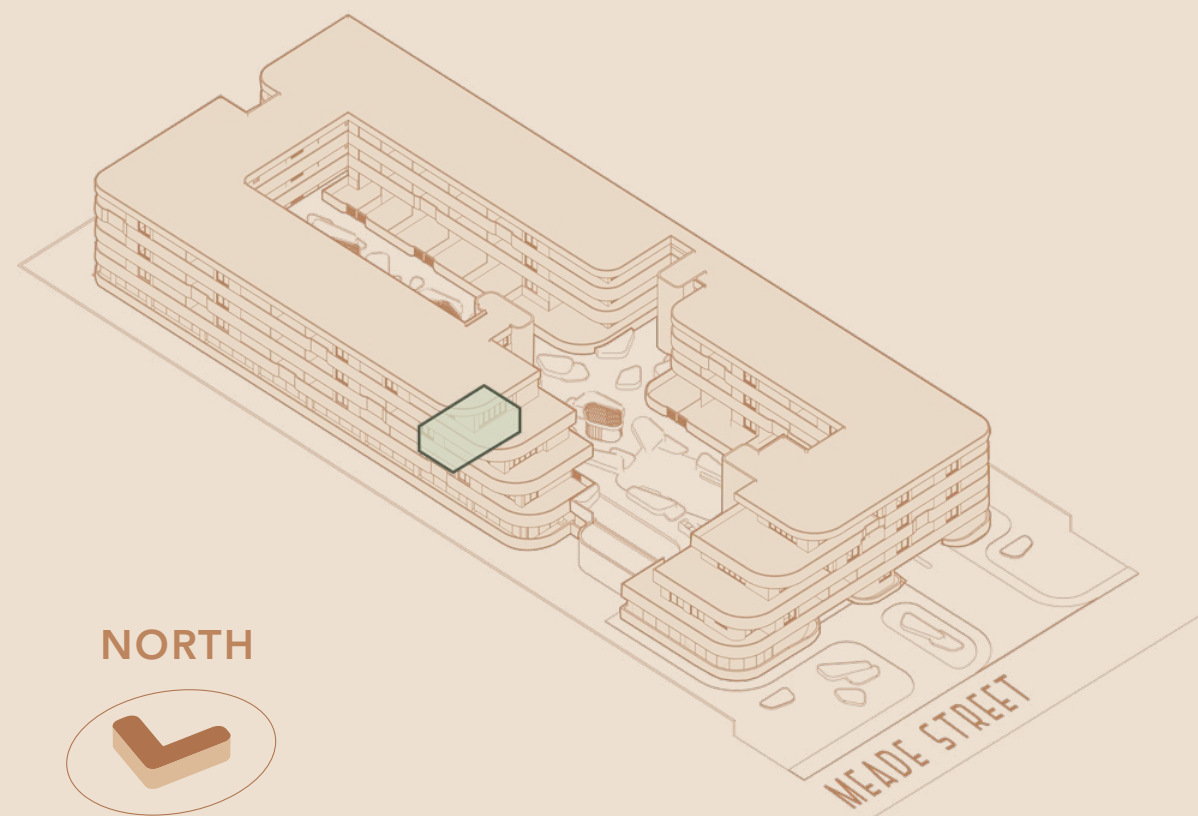
R1,645,000



Levies* **R1,498 PM**
 Rates* **R1,000 PM**
 Bond Cost* **R16,044 PM**

Total Area **49.48 SQM**
 Internal Area **37.32 SQM**
 Covered Balcony **12.16 SQM**

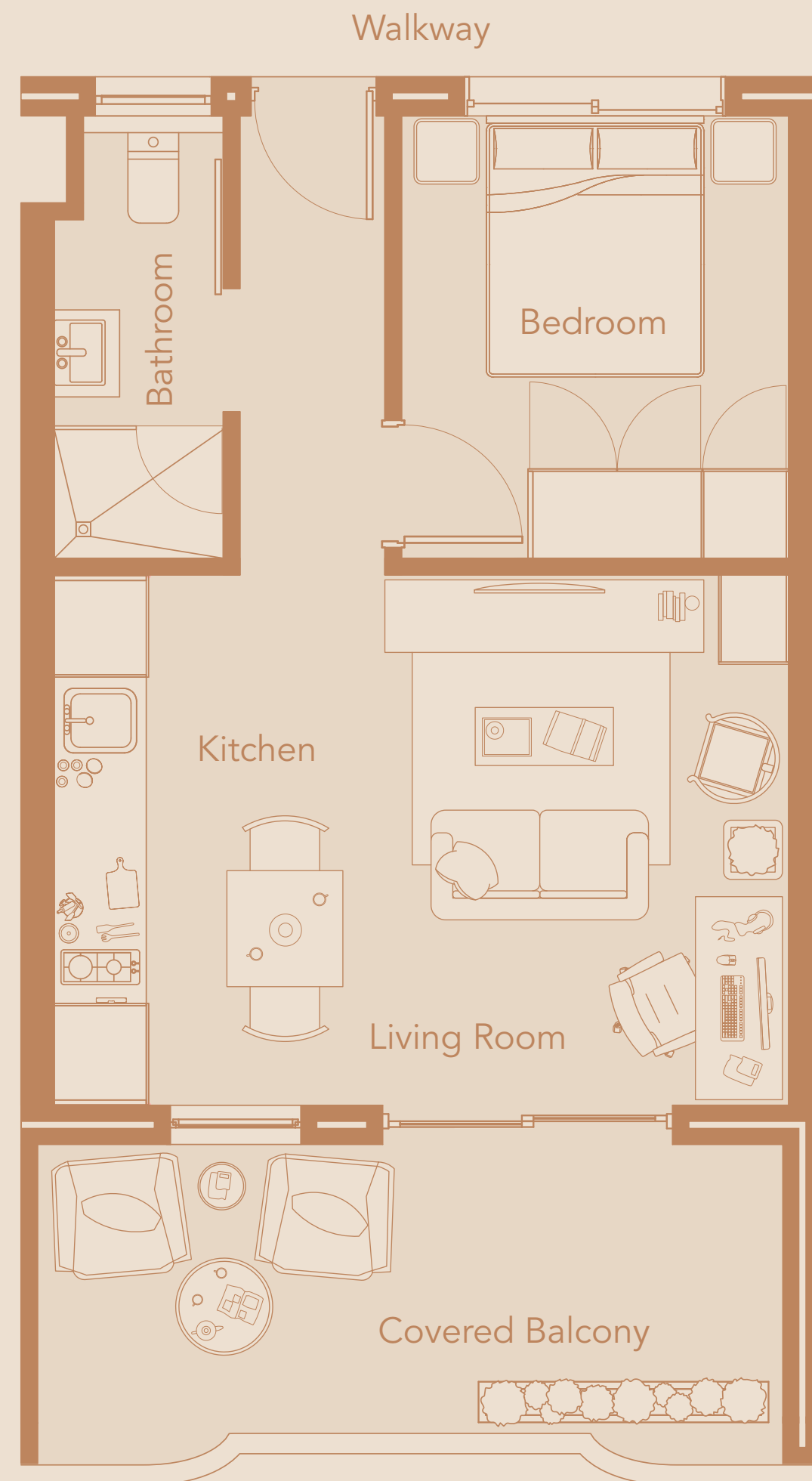
Location in Building
FIRST FLOOR



the **MEADE**

* Indicated values are estimates

Estimated bond cost is calculated on 90% finance over 20 years, using the current prime lending rate
 Unit axonometric is an artist's impression, layout may differ slightly | T&C's apply



VIEW TO OUTENIQUA

