

TWO BEDROOM APARTMENT
UNIT 107

the **MEADE**

* Indicated values are estimates

Estimated bond cost is calculated on 90% finance over 20 years, using the current prime lending rate
 Unit axonometric is an artist's impression, layout may differ slightly | T&C's apply

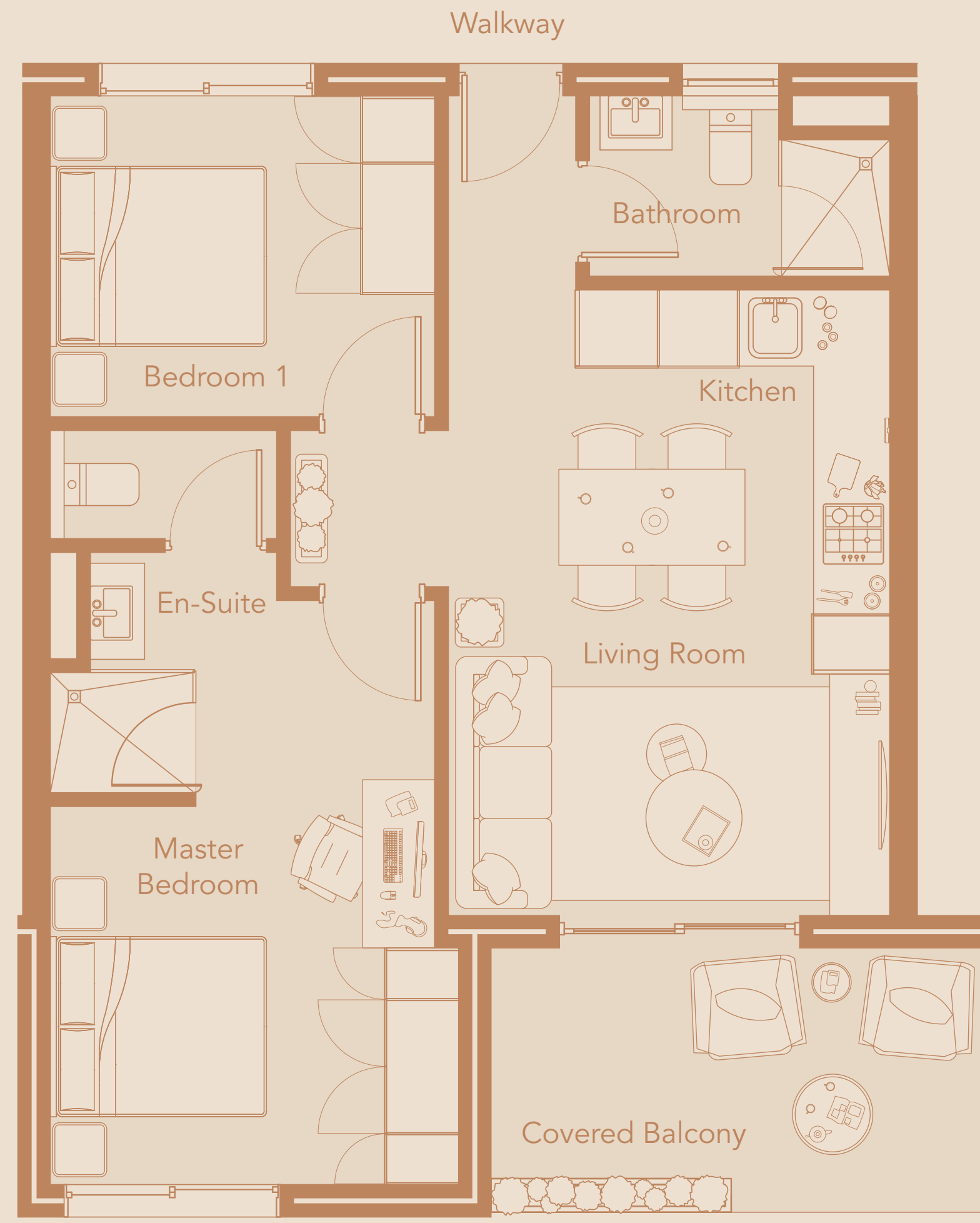
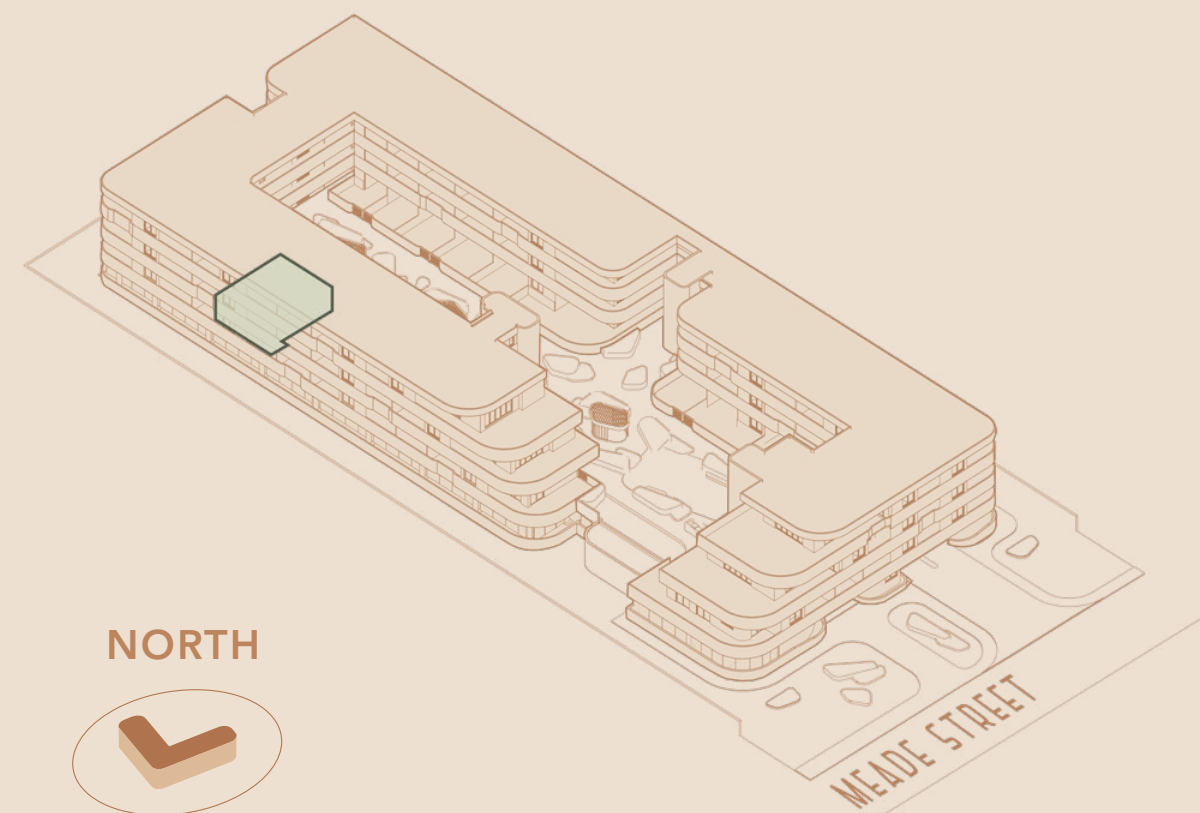
R2,240,000



Levies* **R2,126 PM**
 Rates* **R1,400 PM**
 Bond Cost* **R21,848 PM**

Total Area **69.17 SQM**
 Internal Area **58.78 SQM**
 Covered Balcony **10.39 SQM**

Location in Building
FIRST FLOOR



VIEW TO OUTENIQUA

