

TWO BEDROOM APARTMENT  
**UNIT 110**

the **MEADE**

\* Indicated values are estimates

Estimated bond cost is calculated on 90% finance over 20 years, using the current prime lending rate  
Unit axonometric is an artist's impression, layout may differ slightly | T&C's apply

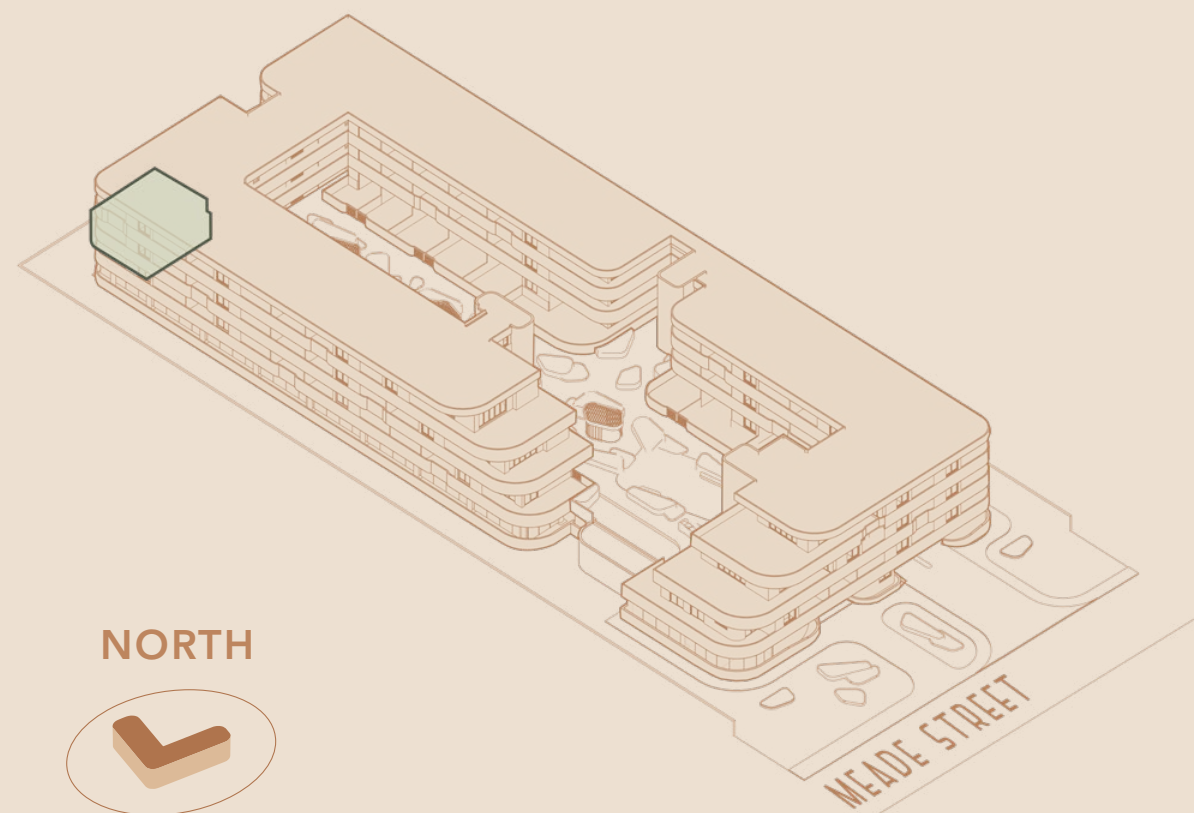
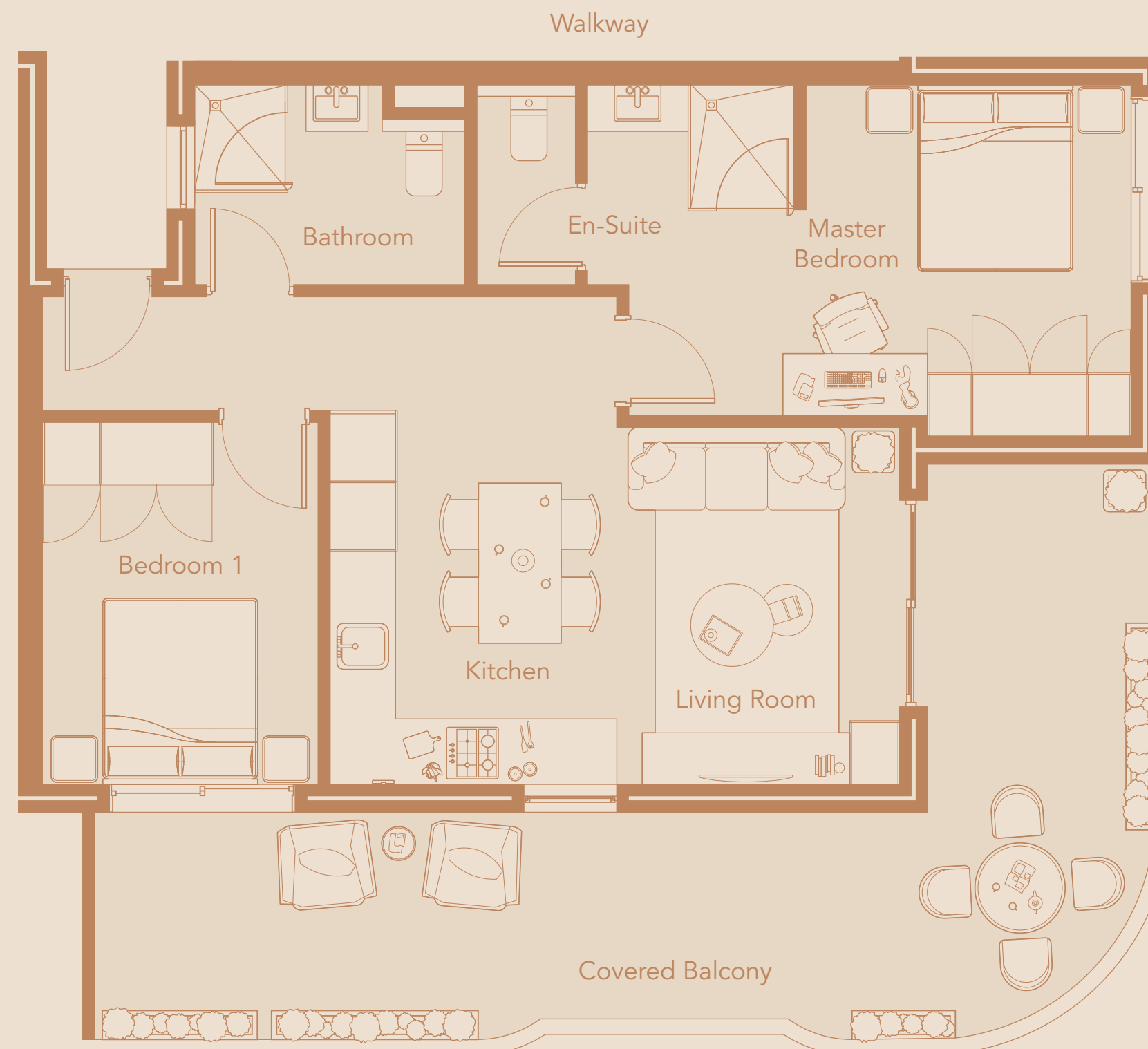
**R3,145,000**



Levies\* **R2,923 PM**  
Rates\* **R2,100 PM**  
Bond Cost\* **R30,674 PM**

Total Area **96.56 SQM**  
Internal Area **65.04 SQM**  
Covered Balcony **31.52 SQM**

Location in Building  
**FIRST FLOOR**



VIEW TO EAST