

TWO BEDROOM APARTMENT
UNIT 111

the **MEADE**

* Indicated values are estimates

Estimated bond cost is calculated on 90% finance over 20 years, using the current prime lending rate
 Unit axonometric is an artist's impression, layout may differ slightly | T&C's apply

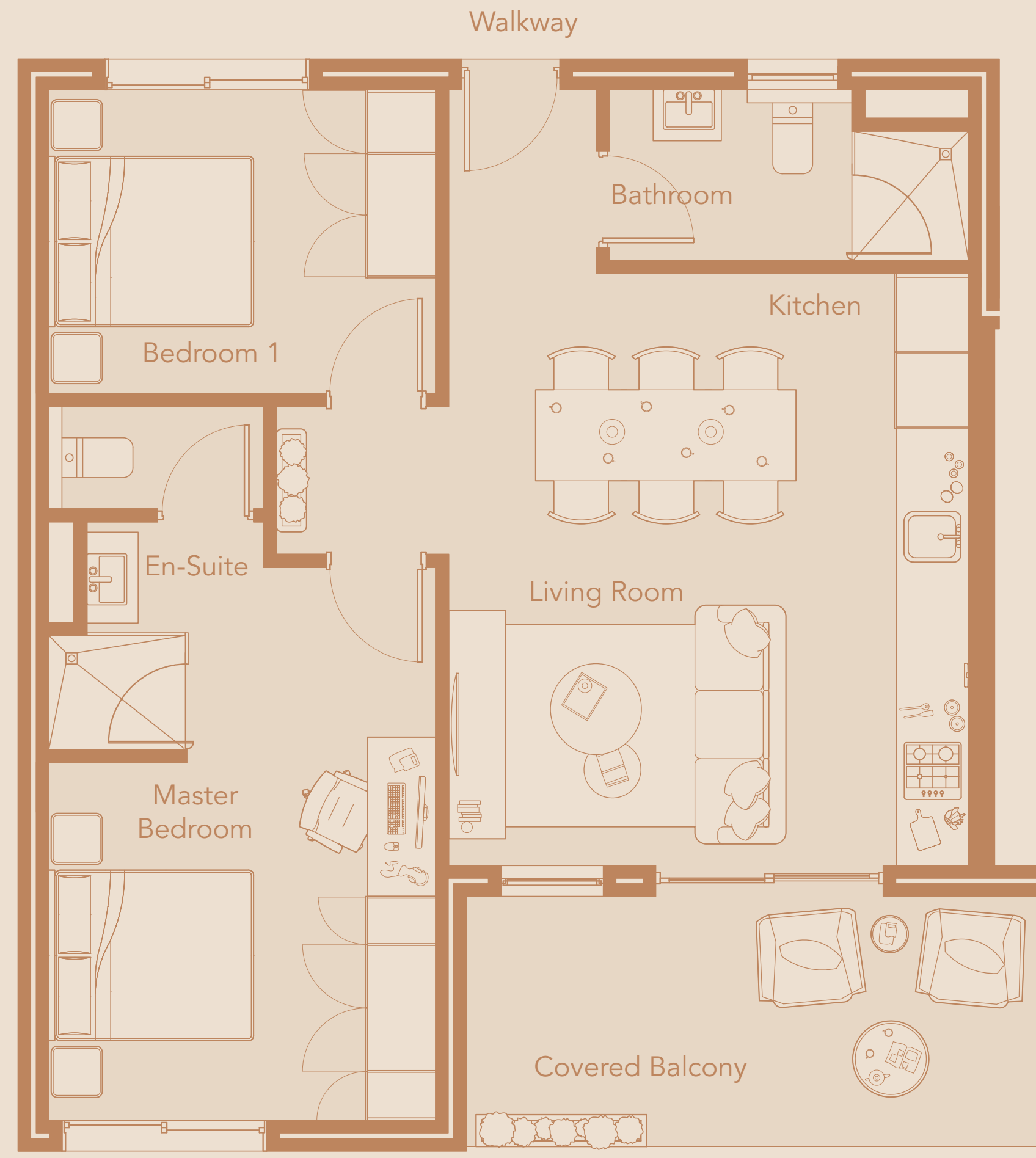
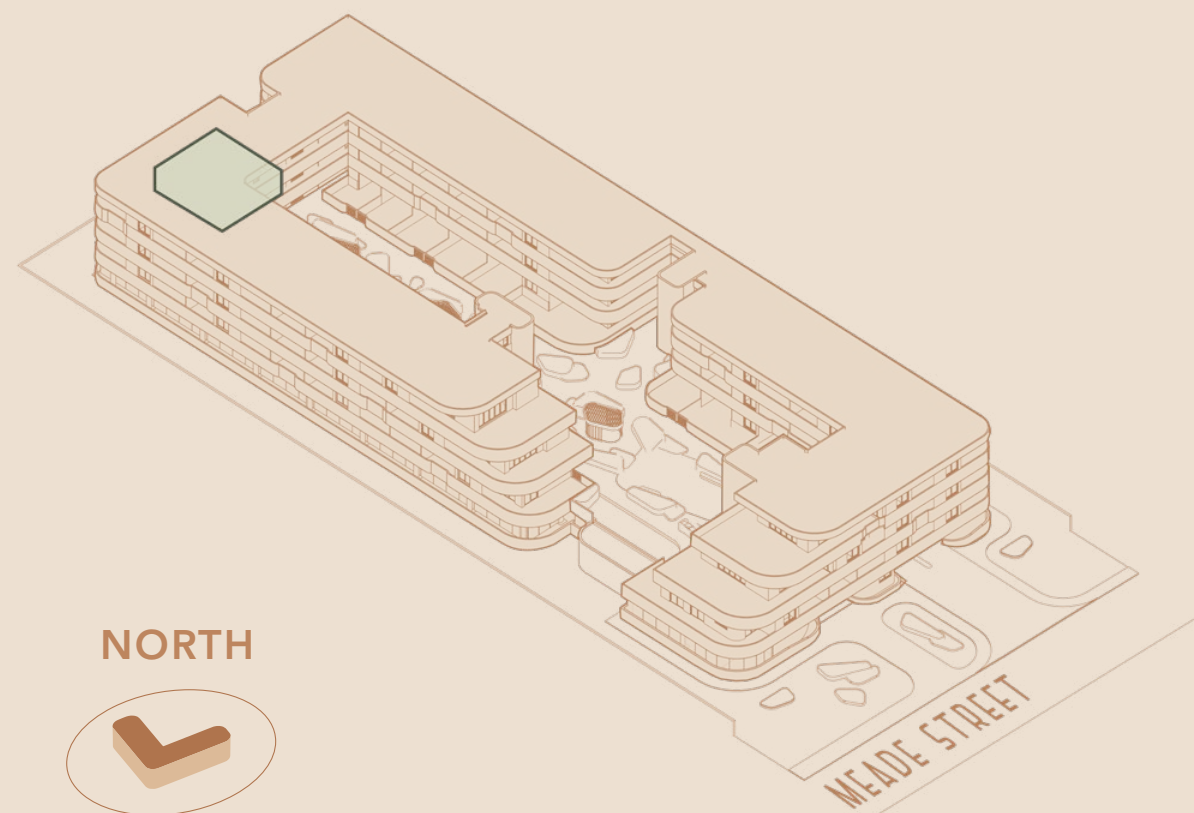
R2,600,000



Levies* **R2,400 PM**
 Rates* **R1,700 PM**
 Bond Cost* **R25,359 PM**

Total Area **79.26 SQM**
 Internal Area **66.66 SQM**
 Covered Balcony **12.6 SQM**

Location in Building
FIRST FLOOR



VIEW TO EAST

