

TWO BEDROOM APARTMENT
UNIT 112

the **MEADE**

* Indicated values are estimates

Estimated bond cost is calculated on 90% finance over 20 years, using the current prime lending rate
Unit axonometric is an artist's impression, layout may differ slightly | T&C's apply

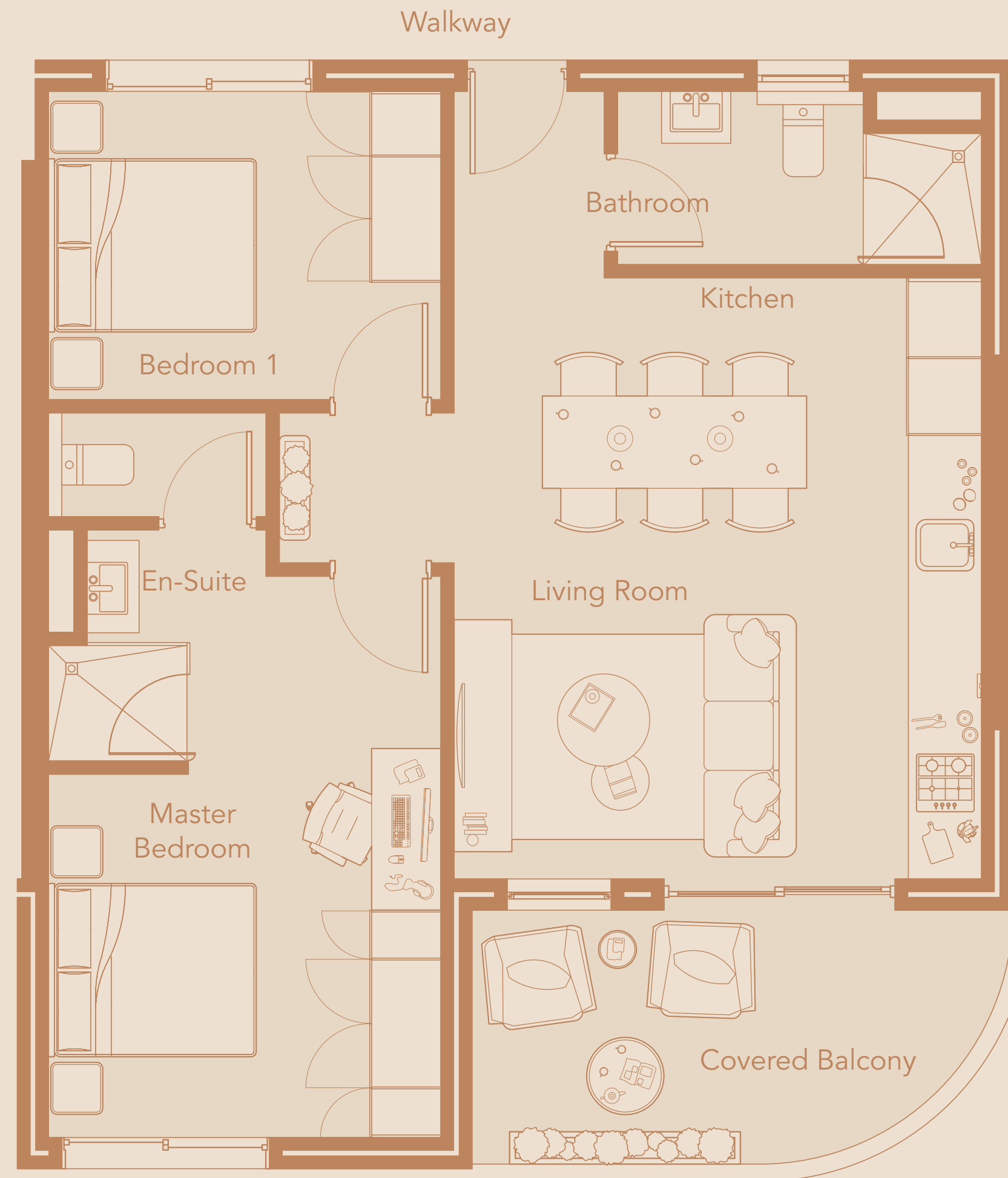
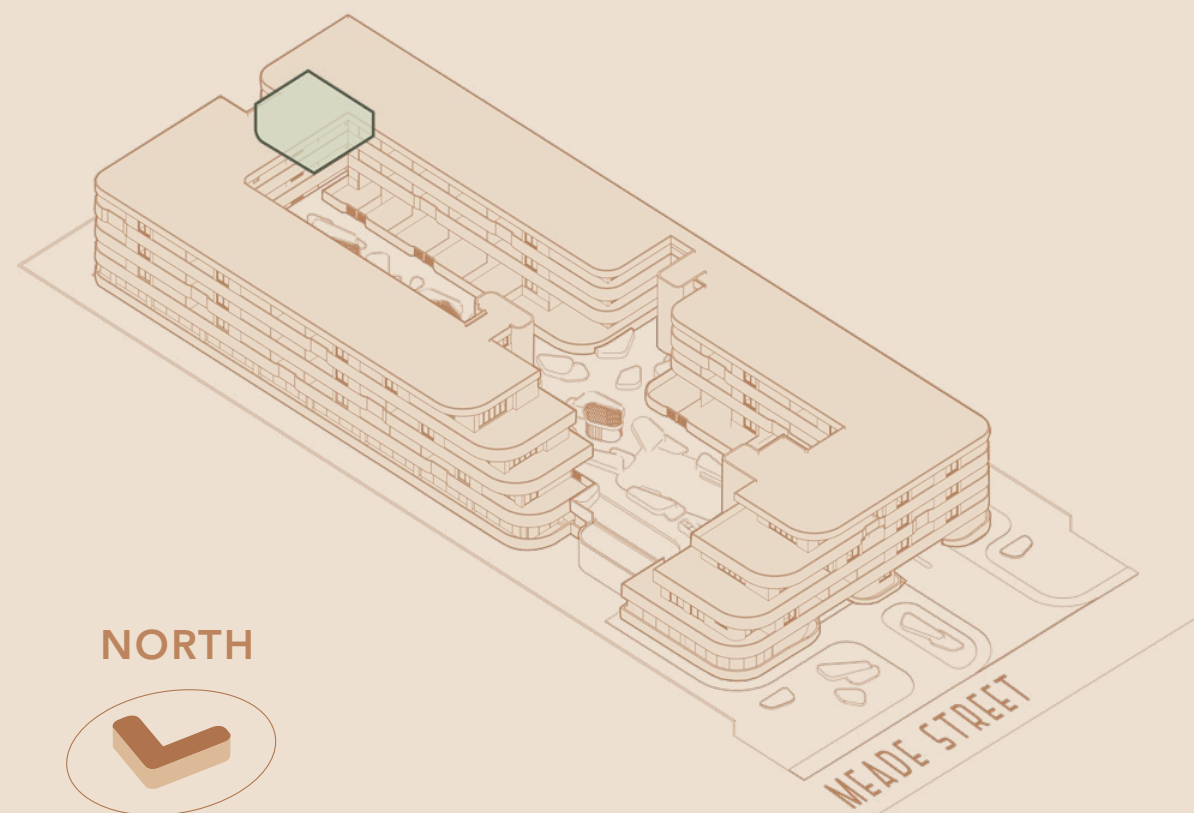
R2,550,000



Levies* **R2,341 PM**
Rates* **R1,600 PM**
Bond Cost* **R24,871 PM**

Total Area **77.33 SQM**
Internal Area **66.64 SQM**
Covered Balcony **10.7 SQM**

Location in Building
FIRST FLOOR



VIEW TO EAST

