

# ONE BEDROOM APARTMENT UNIT 113

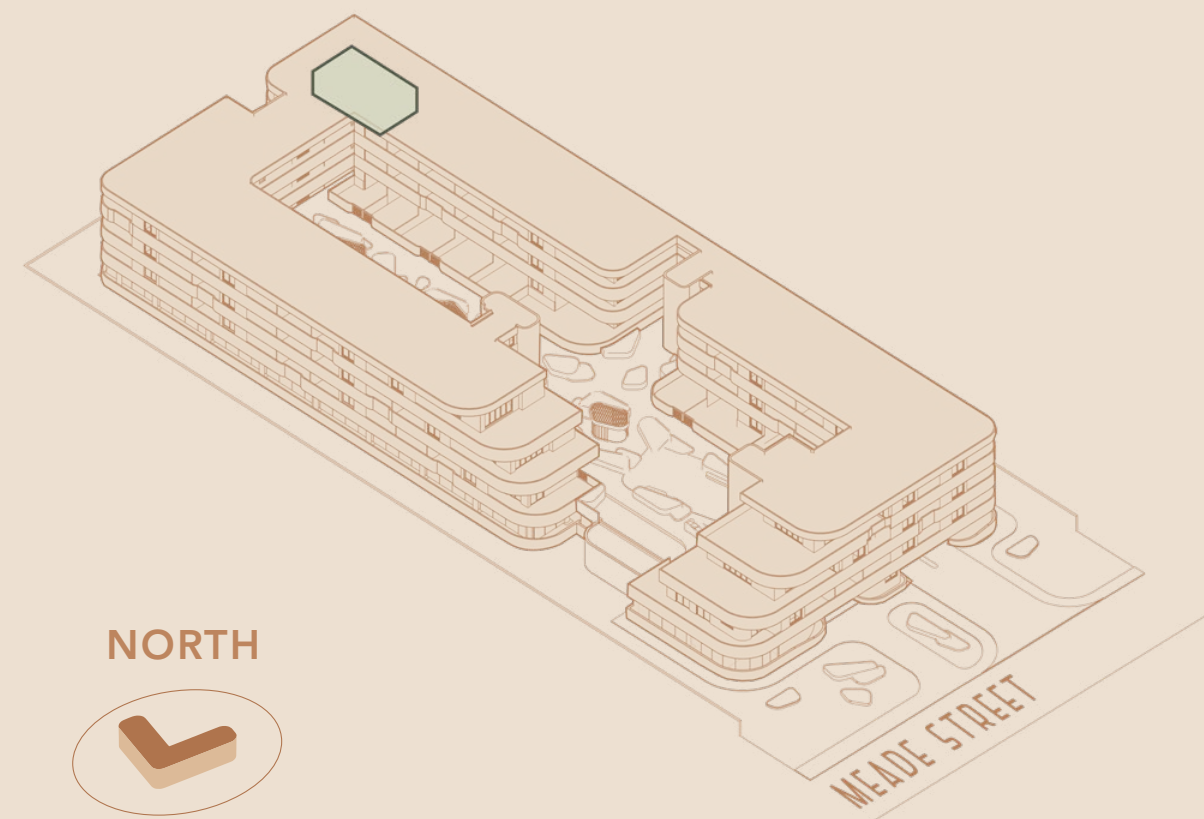
**R1,495,000**



Levies\* **R1,556 PM**  
 Rates\* **R900 PM**  
 Bond Cost\* **R14,581 PM**

Total Area **50.72 SQM**  
 Internal Area **37.55 SQM**  
 Covered Balcony **13.17 SQM**

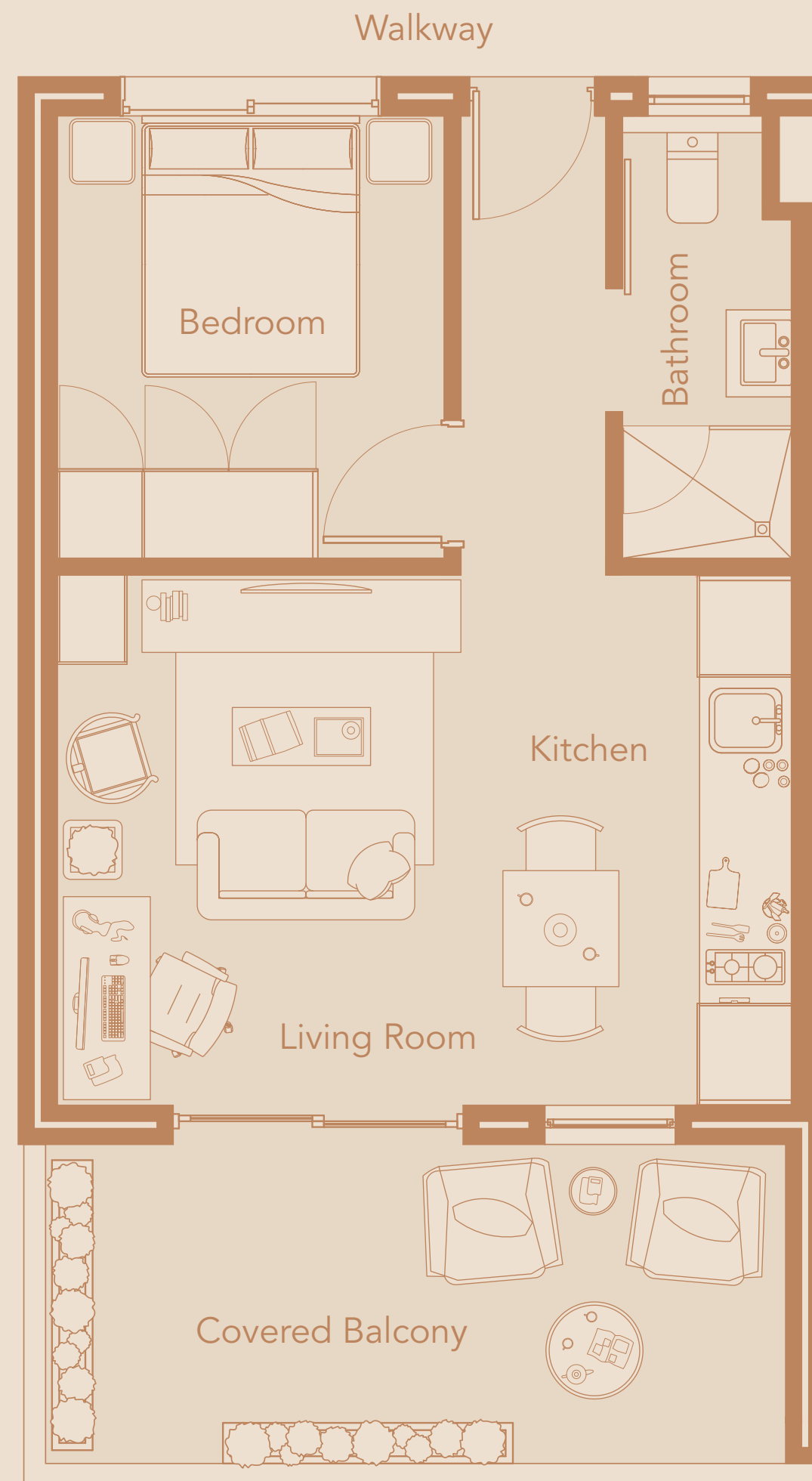
Location in Building  
**FIRST FLOOR**



the **MEADE**

\* Indicated values are estimates

Estimated bond cost is calculated on 90% finance over 20 years, using the current prime lending rate  
 Unit axonometric is an artist's impression, layout may differ slightly | T&C's apply



▼ VIEW TO EAST

