

TWO BEDROOM APARTMENT
UNIT 121

the **MEADE**

* Indicated values are estimates

Estimated bond cost is calculated on 90% finance over 20 years, using the current prime lending rate
 Unit axonometric is an artist's impression, layout may differ slightly | T&C's apply

R2,840,000



Levies* **R2,354 PM**

Rates* **R1,800 PM**

Bond Cost* **R27,700 PM**

Total Area **77.74 SQM** (Exc. Garden)

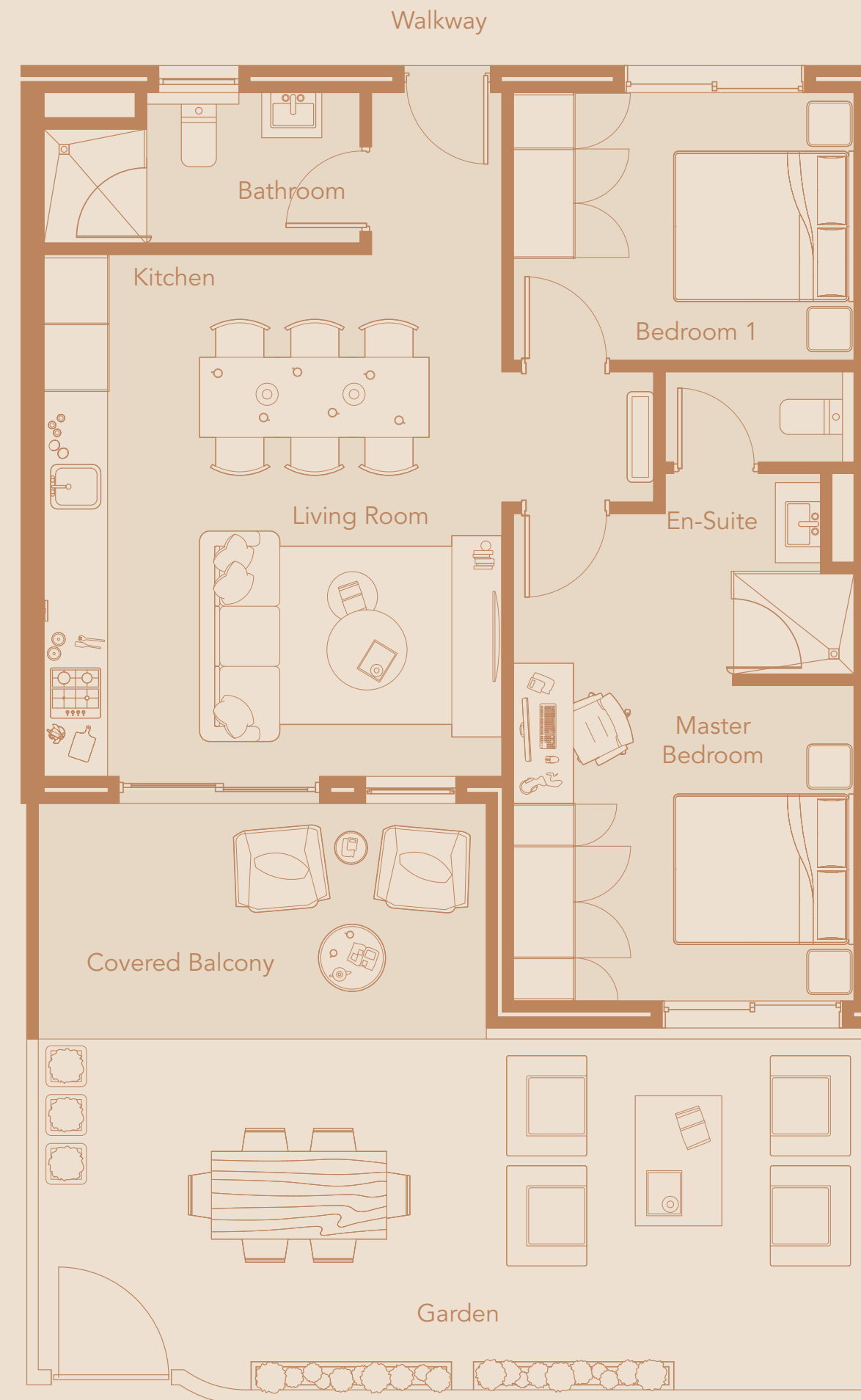
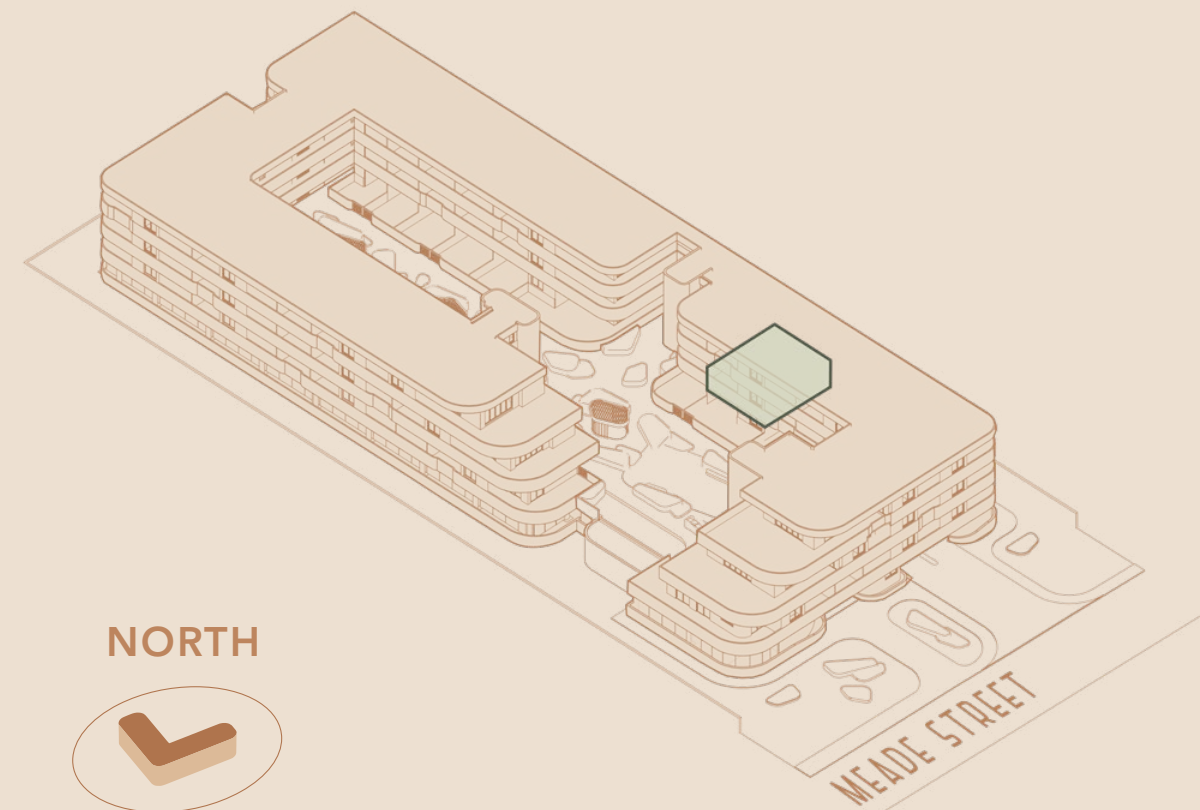
Internal Area 66.5 SQM

Covered Balcony 11.24 SQM

Garden 30.99 SQM

Location in Building

FIRST FLOOR



VIEW TO COURTYARD

