

TWO BEDROOM APARTMENT
UNIT 125

the **MEADE**

* Indicated values are estimates

Estimated bond cost is calculated on 90% finance over 20 years, using the current prime lending rate
 Unit axonometric is an artist's impression, layout may differ slightly | T&C's apply

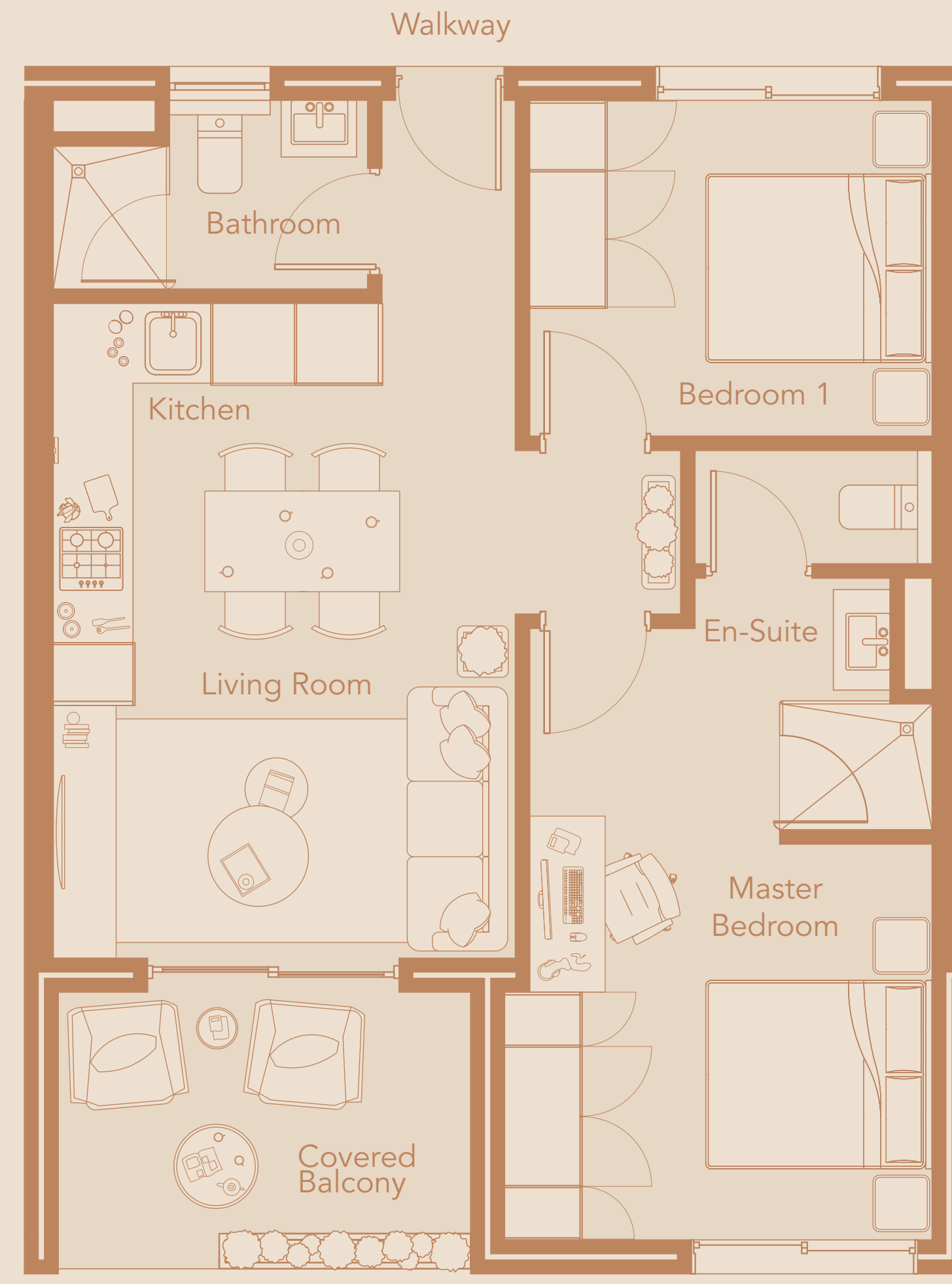
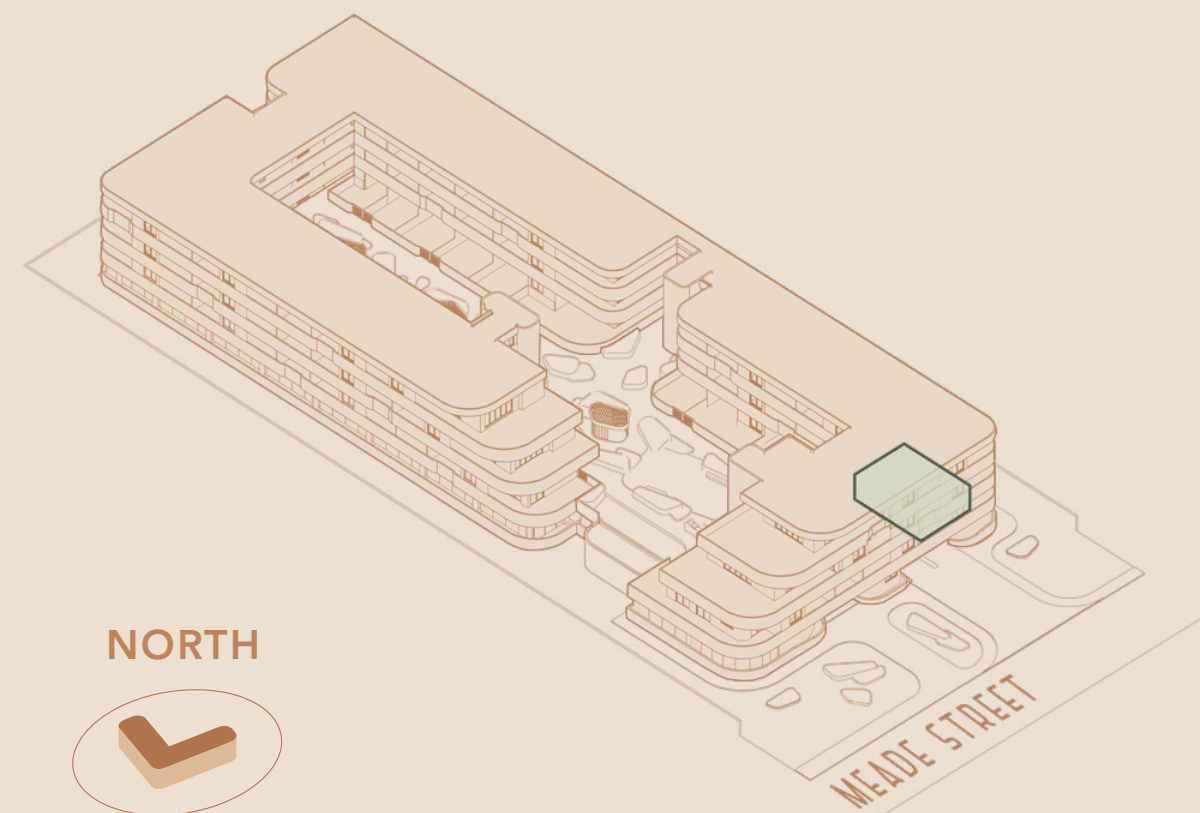
R2,055,000



Levies* **R2,069 PM**
 Rates* **R1,300 PM**
 Bond Cost* **R20,043 PM**

Total Area **67.33 SQM**
 Internal Area **58.77 SQM**
 Covered Balcony **8.56 SQM**

Location in Building
FIRST FLOOR



VIEW TO MEADE STREET

