

TWO BEDROOM APARTMENT
UNIT 209

the **MEADE**

* Indicated values are estimates

Estimated bond cost is calculated on 90% finance over 20 years, using the current prime lending rate
 Unit axonometric is an artist's impression, layout may differ slightly | T&C's apply

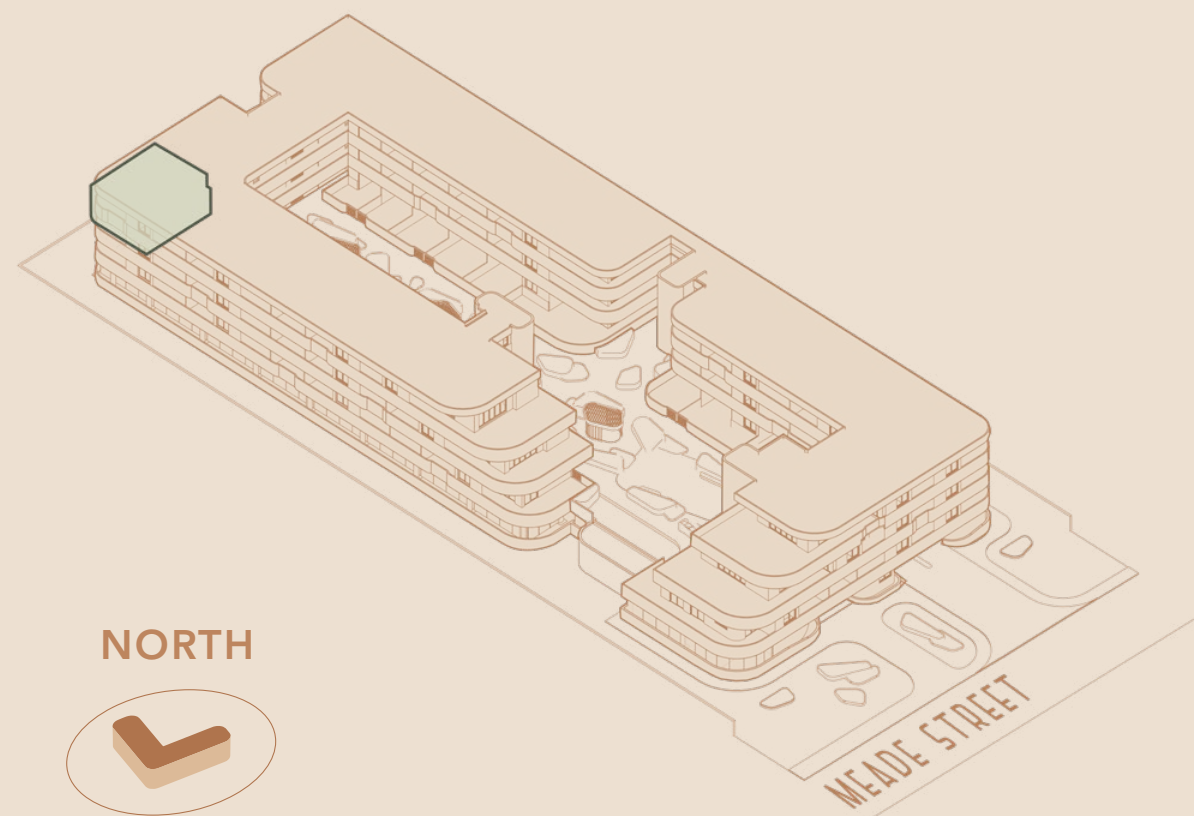
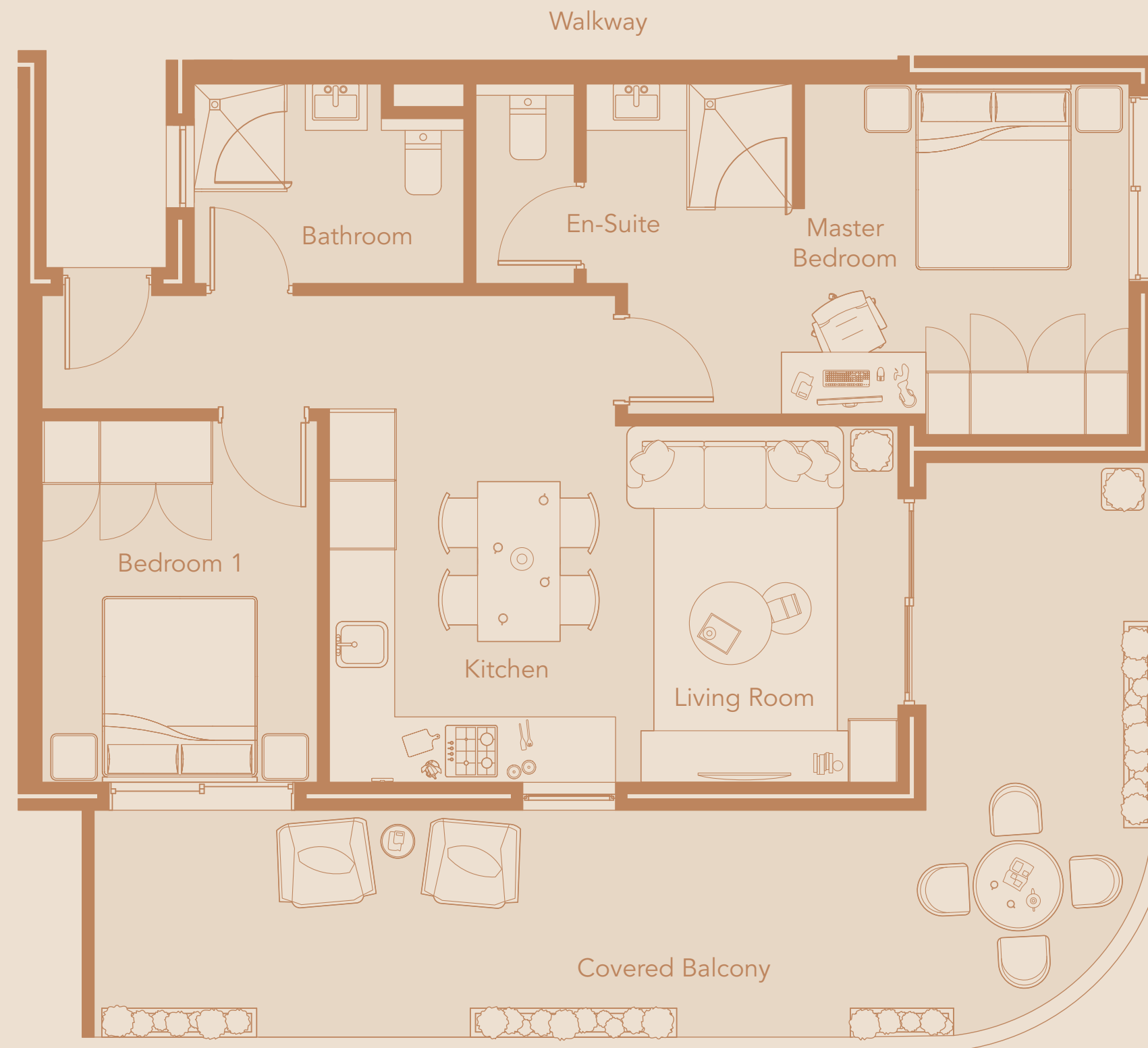
R3,055,000



Levies* **R2,980 PM**
 Rates* **R2,000 PM**
 Bond Cost* **R29,797 PM**

Total Area **97.11 SQM**
 Internal Area **65.04 SQM**
 Covered Balcony **32.07 SQM**

Location in Building
SECOND FLOOR



NORTH



VIEW TO EAST