

TWO BEDROOM APARTMENT
UNIT 211

the **MEADE**

* Indicated values are estimates

Estimated bond cost is calculated on 90% finance over 20 years, using the current prime lending rate
 Unit axonometric is an artist's impression, layout may differ slightly | T&C's apply

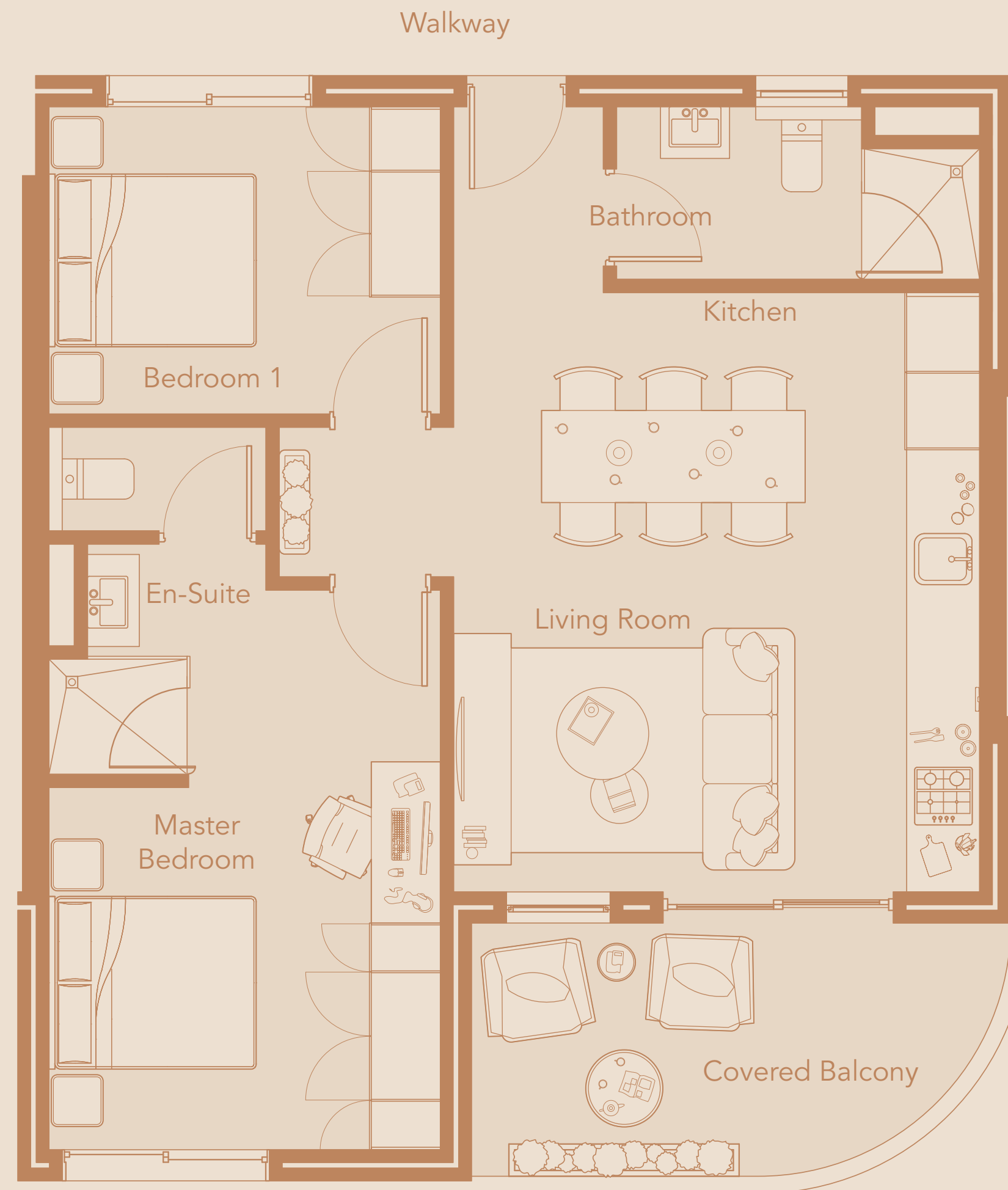
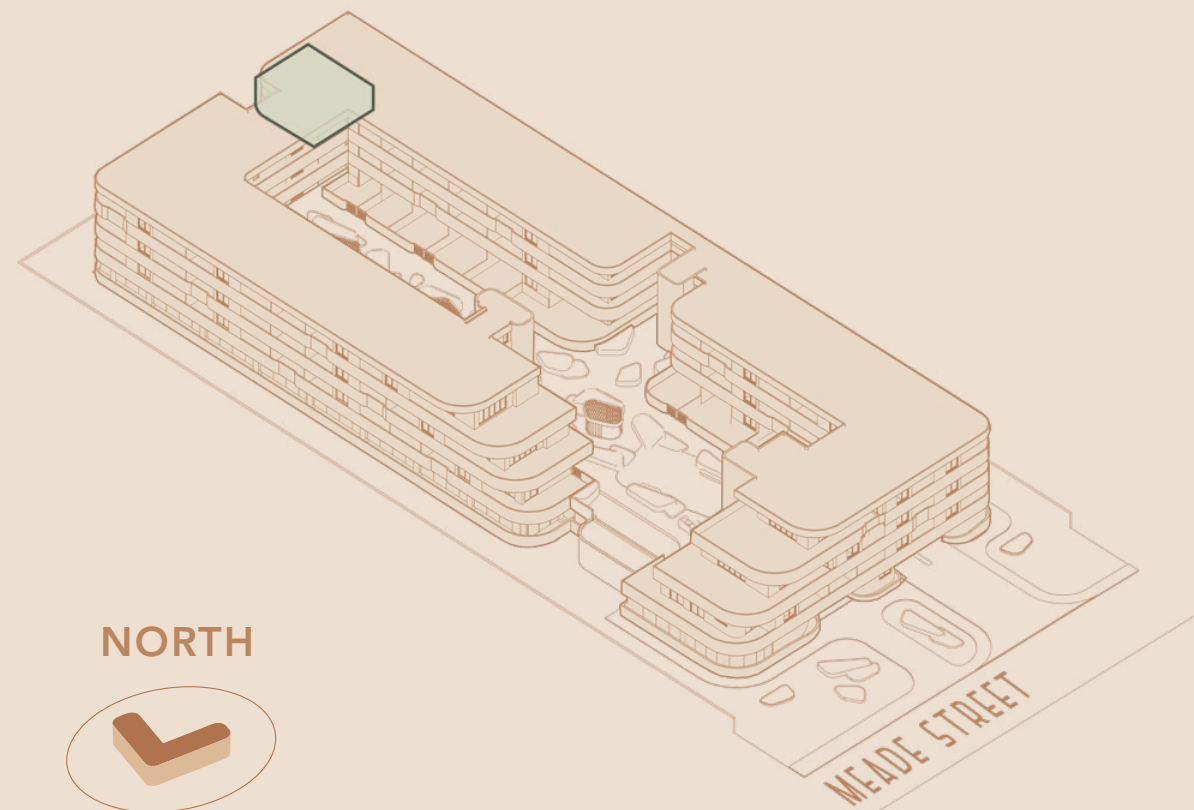
R2,475,000



Levies* **R2,341 PM**
 Rates* **R1,600 PM**
 Bond Cost* **R24,140 PM**

Total Area **77.33 SQM**
 Internal Area **66.64 SQM**
 Covered Balcony **10.7 SQM**

Location in Building
SECOND FLOOR



▼ VIEW TO EAST

