

ONE BEDROOM APARTMENT
UNIT 217

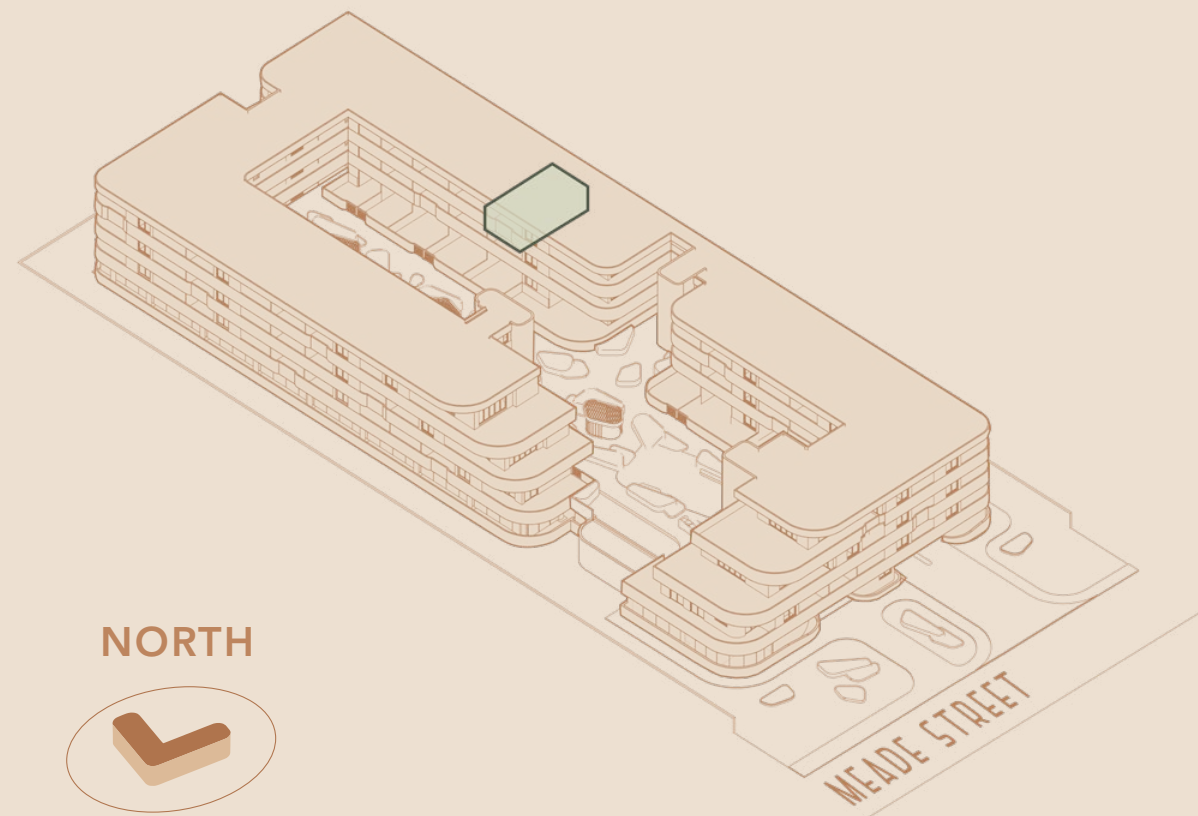
R1,525,000



Levies* **R1,517 PM**
 Rates* **R900 PM**
 Bond Cost* **R14,874 PM**

Total Area **50.12 SQM**
 Internal Area **37.41 SQM**
 Covered Balcony **12.71 SQM**

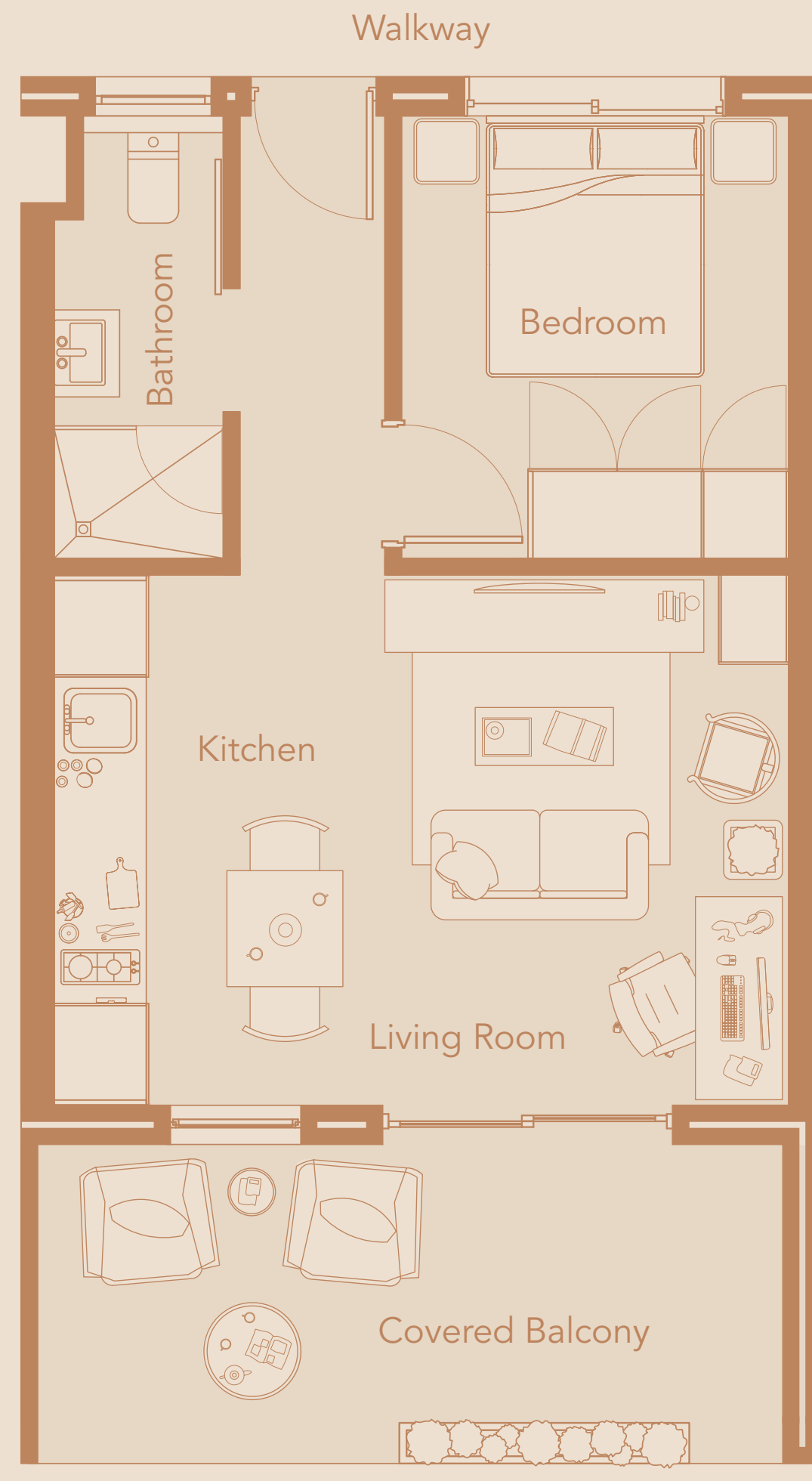
Location in Building
SECOND FLOOR



the **MEADE**

* Indicated values are estimates

Estimated bond cost is calculated on 90% finance over 20 years, using the current prime lending rate
 Unit axonometric is an artist's impression, layout may differ slightly | T&C's apply



VIEW TO COURTYARD

