

TWO BEDROOM APARTMENT  
**UNIT 225**

the **MEADE**

\* Indicated values are estimates

Estimated bond cost is calculated on 90% finance over 20 years, using the current prime lending rate  
 Unit axonometric is an artist's impression, layout may differ slightly | T&C's apply

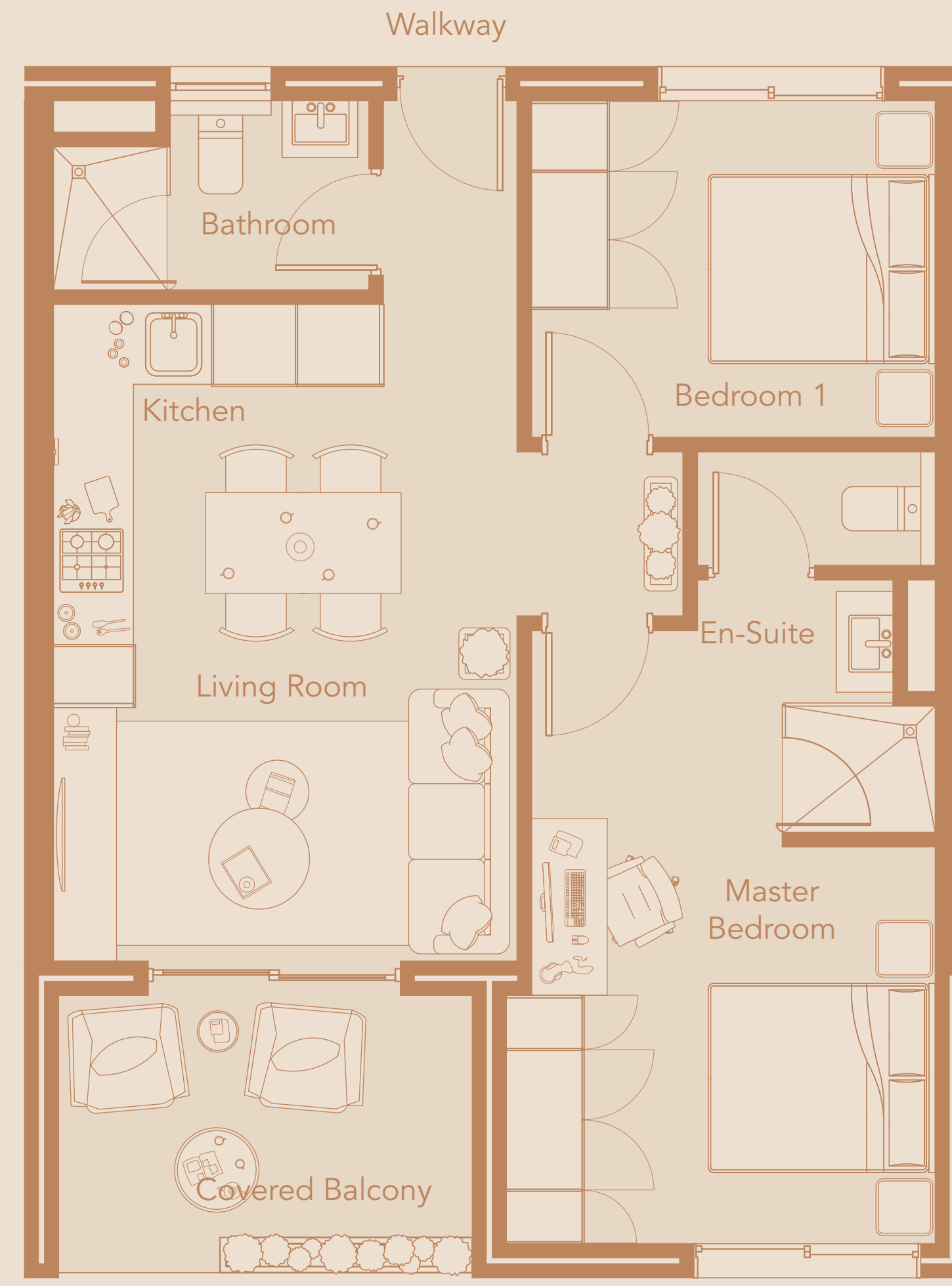
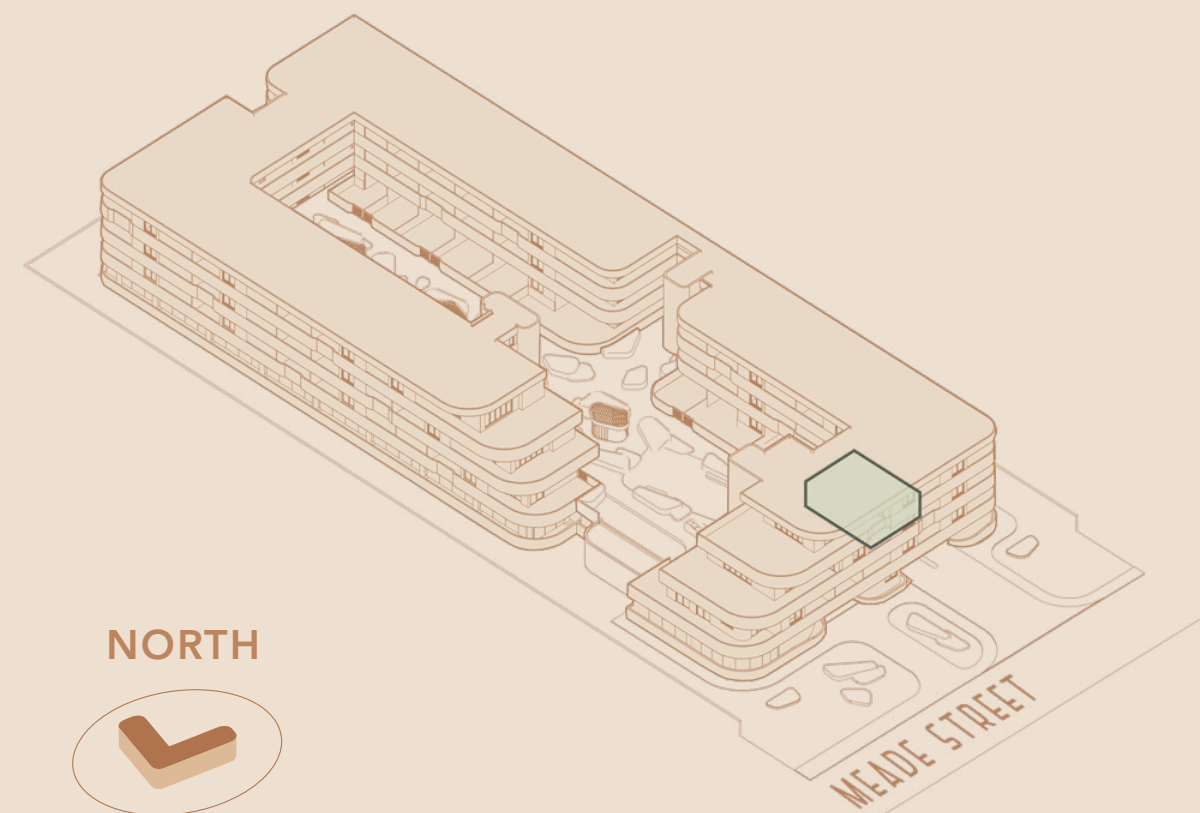
**R1,995,000**



Levies\* **R2,035 PM**  
 Rates\* **R1,300 PM**  
 Bond Cost\* **R19,458 PM**

Total Area **67.23 SQM**  
 Internal Area **58.67 SQM**  
 Covered Balcony **8.56 SQM**

Location in Building  
**SECOND FLOOR**



VIEW TO MEADE STREET

