

TWO BEDROOM APARTMENT  
**UNIT 305**

the **MEADE**

\* Indicated values are estimates

Estimated bond cost is calculated on 90% finance over 20 years, using the current prime lending rate  
 Unit axonometric is an artist's impression, layout may differ slightly | T&C's apply

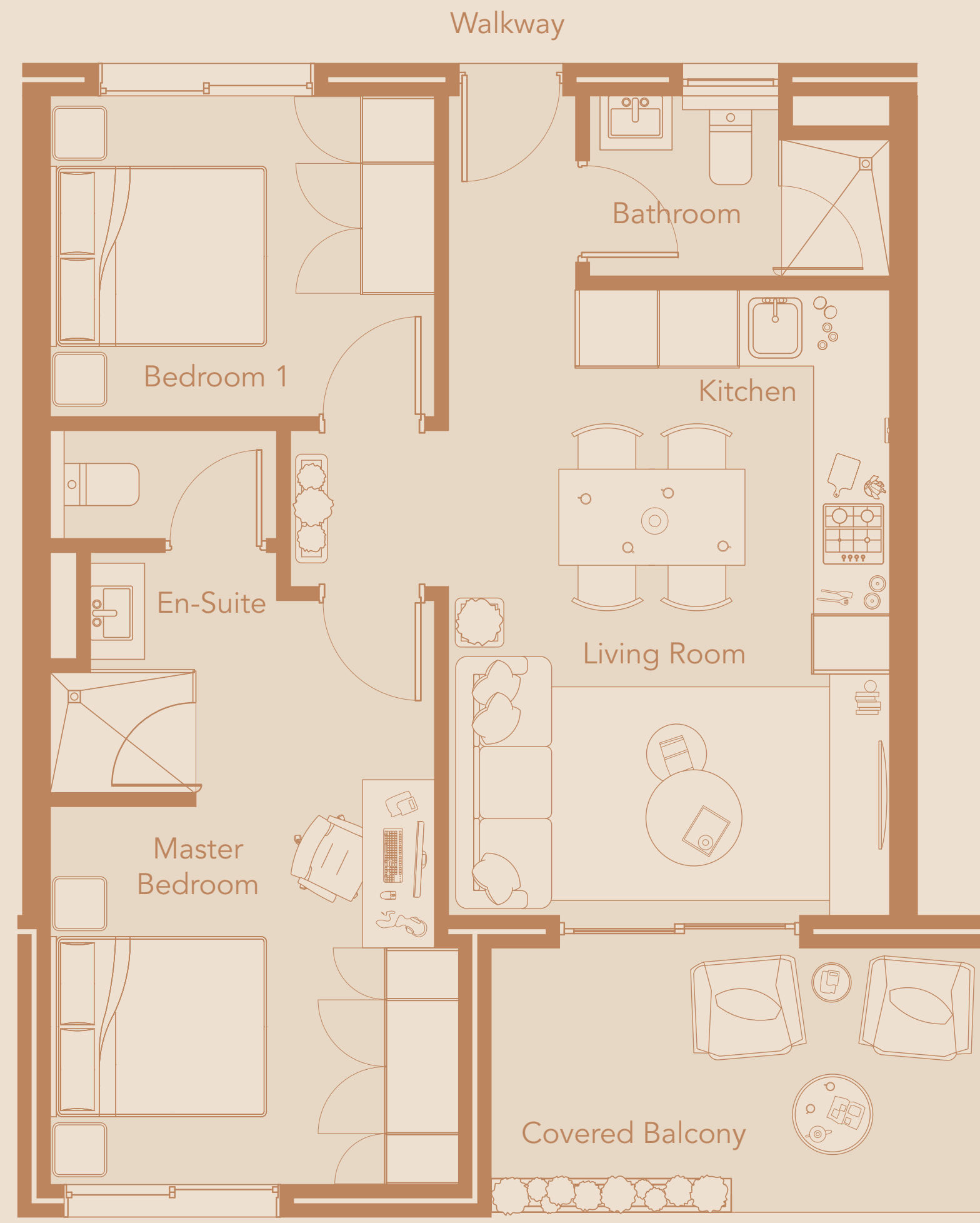
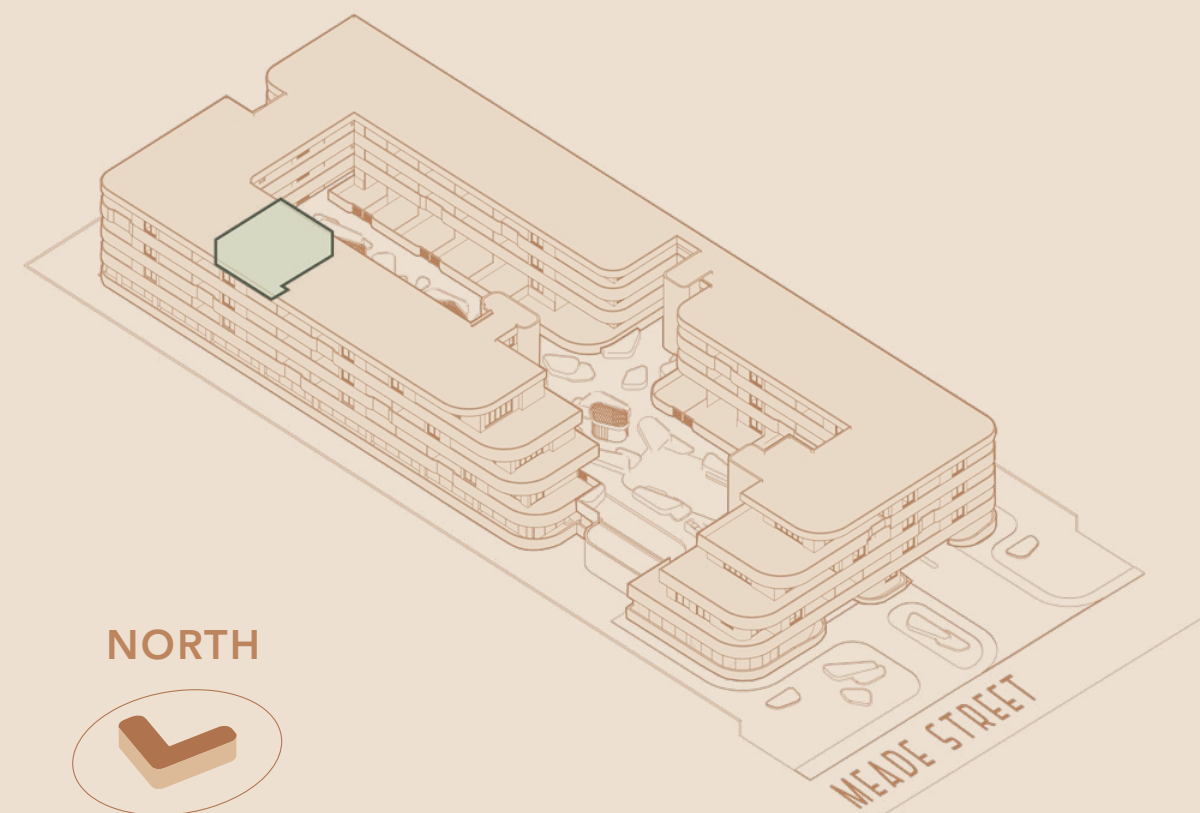
**R2,305,000**



Levies\* **R2,098 PM**  
 Rates\* **R1,500 PM**  
 Bond Cost\* **R22,482 PM**

Total Area **69.31 SQM**  
 Internal Area **58.77 SQM**  
 Covered Balcony **10.53 SQM**

Location in Building  
**THIRD FLOOR**



VIEW TO OUTENIQUA

