

ONE BEDROOM APARTMENT
UNIT 315

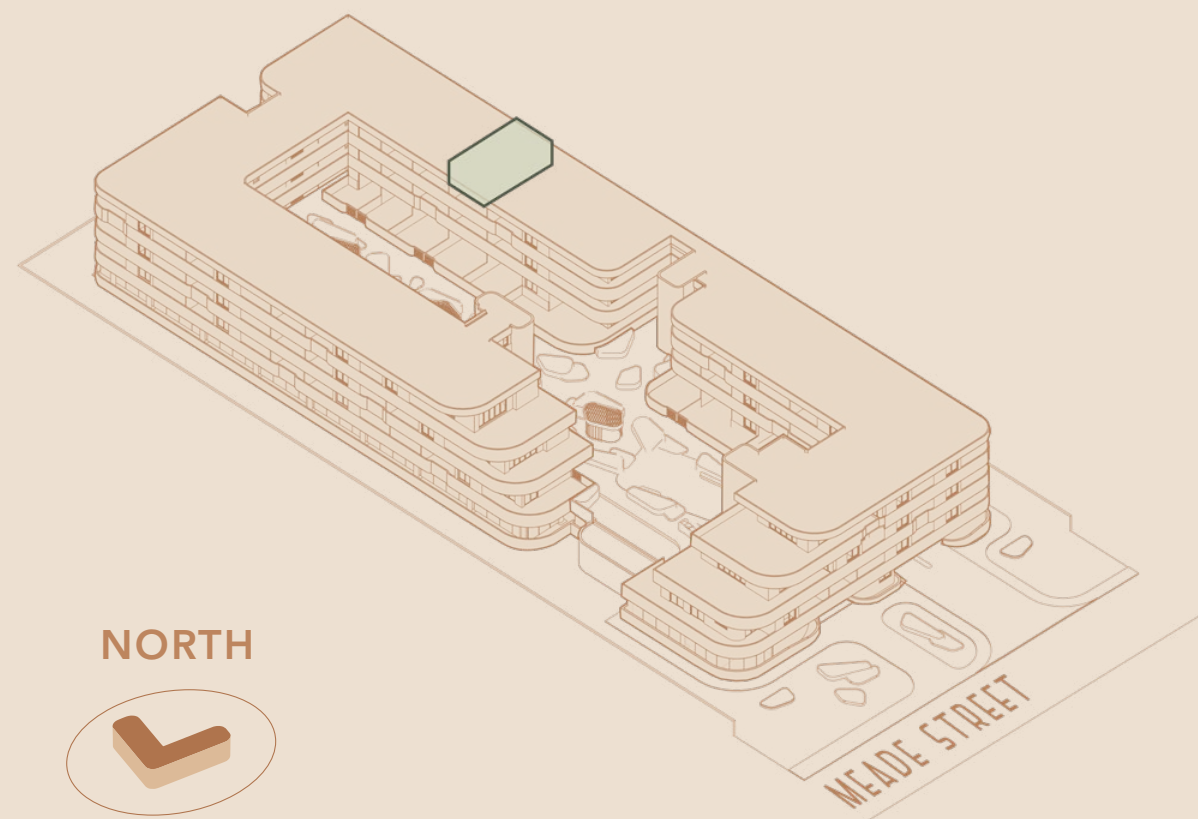
R1,690,000



Levies* **R1,607 PM**
 Rates* **R1,100 PM**
 Bond Cost* **R16,483 PM**

Total Area **53.07 SQM**
 Internal Area **39.57 SQM**
 Covered Balcony **13.5 SQM**

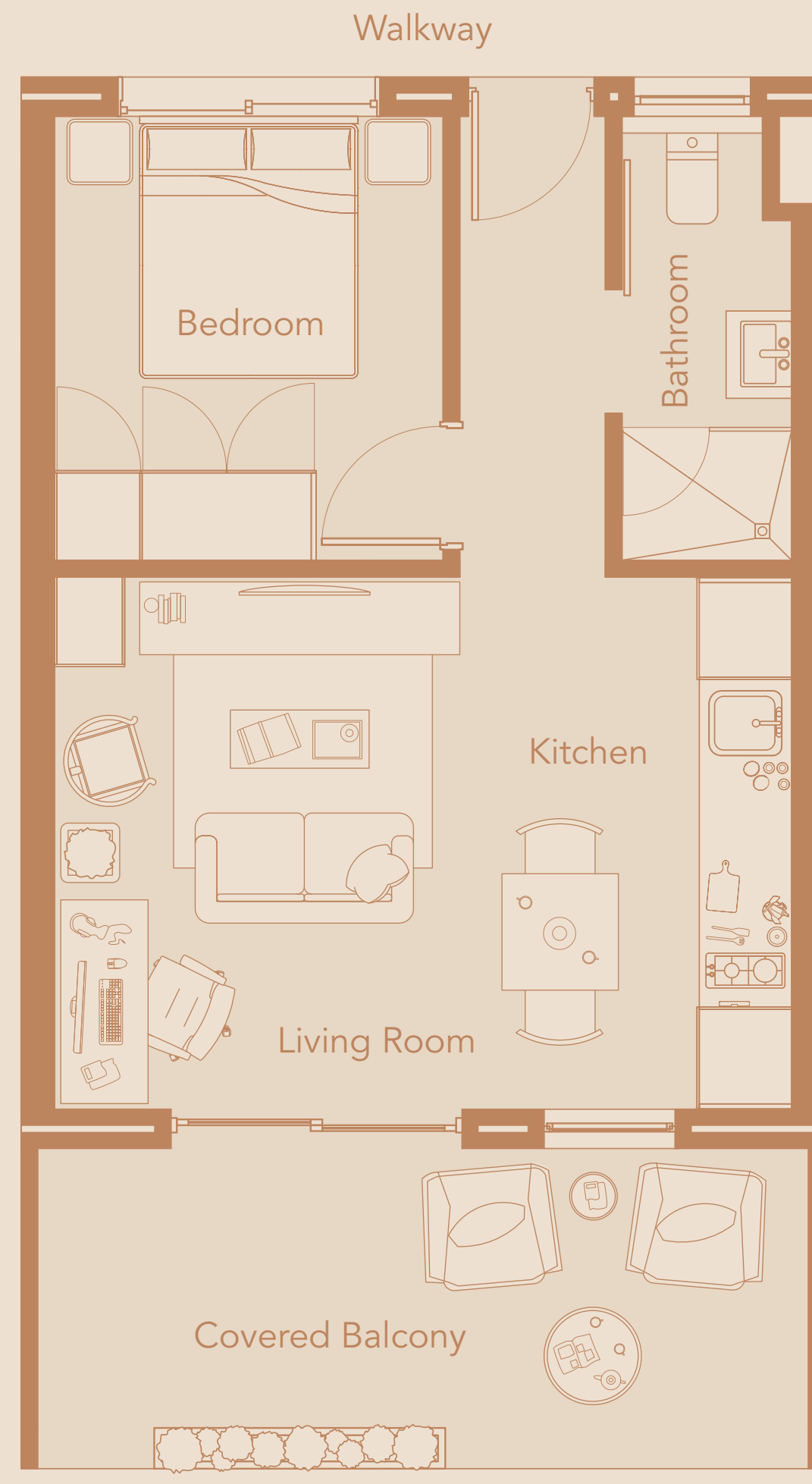
Location in Building
THIRD FLOOR



the **MEADE**

* Indicated values are estimates

Estimated bond cost is calculated on 90% finance over 20 years, using the current prime lending rate
 Unit axonometric is an artist's impression, layout may differ slightly | T&C's apply



VIEW TO COURTYARD

